

A Product Of



**Greenlam**  
Industries Limited



Greenlam

**CLADS**<sup>®</sup>

EXTERIOR GRADE COMPACT LAMINATES

**For those who believe a façade should be more than just a surface -**

We're not here to prescribe design,

but to stand behind bold visions as a trusted partner and a quiet enabler.

You imagine exteriors that turn heads.

We make sure they don't fade, crack, warp, or give up on you.

Global finesse?

World-inspired, made modern and contemporary for today's spaces.

Stone, but better than stone?

Stone-textured realism - lighter, faster to install, easier to love.

Colours, textures, sizes... you choose.

We deliver the goodness at a speed that keeps up with ambition.

Rain, sun, humidity, shifting climates -

We take the challenge, so creations stay pristine.

And when the world asks,

"Who made this?"

We'll smile quietly from the most admired corners,

Because creations that feel Truly Yours deserve to endure.

Here's to every façade that becomes a statement.

Here's to a partner that is, always;

**Cladly Yours.**



\*Images used are for representation purpose only.

**CONTENTS**

About Greenlam Industries	02
Greenlam ESG Goals	04
About Greenlam Clads	06
Product Construct	08
Application Areas	10
What Makes Us Class Apart	14
<b>Finishes</b>	
Jupiter	16
Suede	22
<b>Categories</b>	
Patterns	24
Woods	30
3D Louvers	36
Colours	40
Design Lab	48



**Greenlam is amongst the world's top 3, Asia's largest, and India's No. 1 surfacing solutions brand. With its presence in over 120 countries, Greenlam has focused on developing quality products with a great passion for innovation.**

It offers end-to-end surfacing solutions spread across decorative laminates, compact laminates, interior and exterior clads, restroom cubicles and locker solutions, decorative veneers, engineered wooden floors, doors, plywood, and pre-laminated chipboard. With multiple state-of-the-art manufacturing facilities across the country, it is the first choice of architects, interior designers, and homeowners when it comes to transforming living spaces.

We work in harmony with our environment. Greenlam thinks and acts to save and preserve nature in its pristine form by ethical sourcing of materials from the world over. Coupled with this, the products offered by Greenlam are Greenguard Certified, Anti-Virus, Anti-Bacterial, and Anti-Fungal, thereby ensuring they are environment-friendly and safe to use. With a robust network of over 40,000 distributors and dealers, Greenlam is just a call away to give your spaces a new look.



\*Images used are for representation purpose only.

# DESIGNING TOMORROW RESPONSIBLY

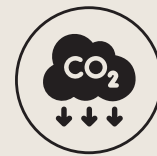
Greenlam ESG journey is based  
on 4 key philosophies



---

## GOAL 01

### Net Zero Carbon Emission & Water Positive



- Net Zero CO2 (scope 1 & 2) by 2030\*
- 20% reduction in energy and water intensity by 2030\*
- 100% Groundwater recharge at factories by 2027
- 20% reduction in transport emissions upstream & downstream by 2030

---

## GOAL 02

### Recycling & Eco Design for Resource Efficiency



- 50% recycled paper use by 2027
- 50% reduction in plastic packaging by 2030\*
- Support new plantations for over 25% of our wood needs by 2030
- 50% wood from certified or verifiable sources by 2035
- Zero waste to landfill by 2030

\*At manufacturing level

---

## GOAL 03

### Safety, Well-Being, & Engagement



- Total reportable incident rate < 1% by 2027
- Medical insurance & accident cover for all employees
- 10% improvement in bottom 3 areas of employee satisfaction score
- Learning & development for all employees

---

## GOAL 04

### Relationships Built on Trust



- 90% suppliers conforming to Business Partner Code of Conduct by 2027
- Strategic suppliers tracked for supplier sustainability by 2027
- Permanent & measurable impact for our communities & harvesters
- Net Promoter Score implementation for customers



**CLADS**<sup>®</sup>  
EXTERIOR GRADE COMPACT LAMINATES

### Exterior Surface Solutions

Elevate exterior façades from mere surfaces to defining statements. Crafted for architects and designers who see the exterior as an extension of their vision, Greenlam Exterior Grade Compact Laminates bring together refined aesthetics and uncompromising performance.

Powered by advanced GLE technology, Greenlam Clads deliver superior weather resistance, antimicrobial protection, and enhanced fire-retardant performance, ensuring that what you create outside, remains as extraordinary as what lies within. Backed by a 12-year warranty, it offers enduring strength, reliability, and confidence for exteriors that stand apart, year after year.

MANUFACTURED USING

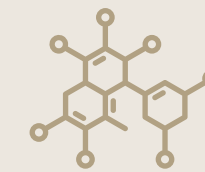
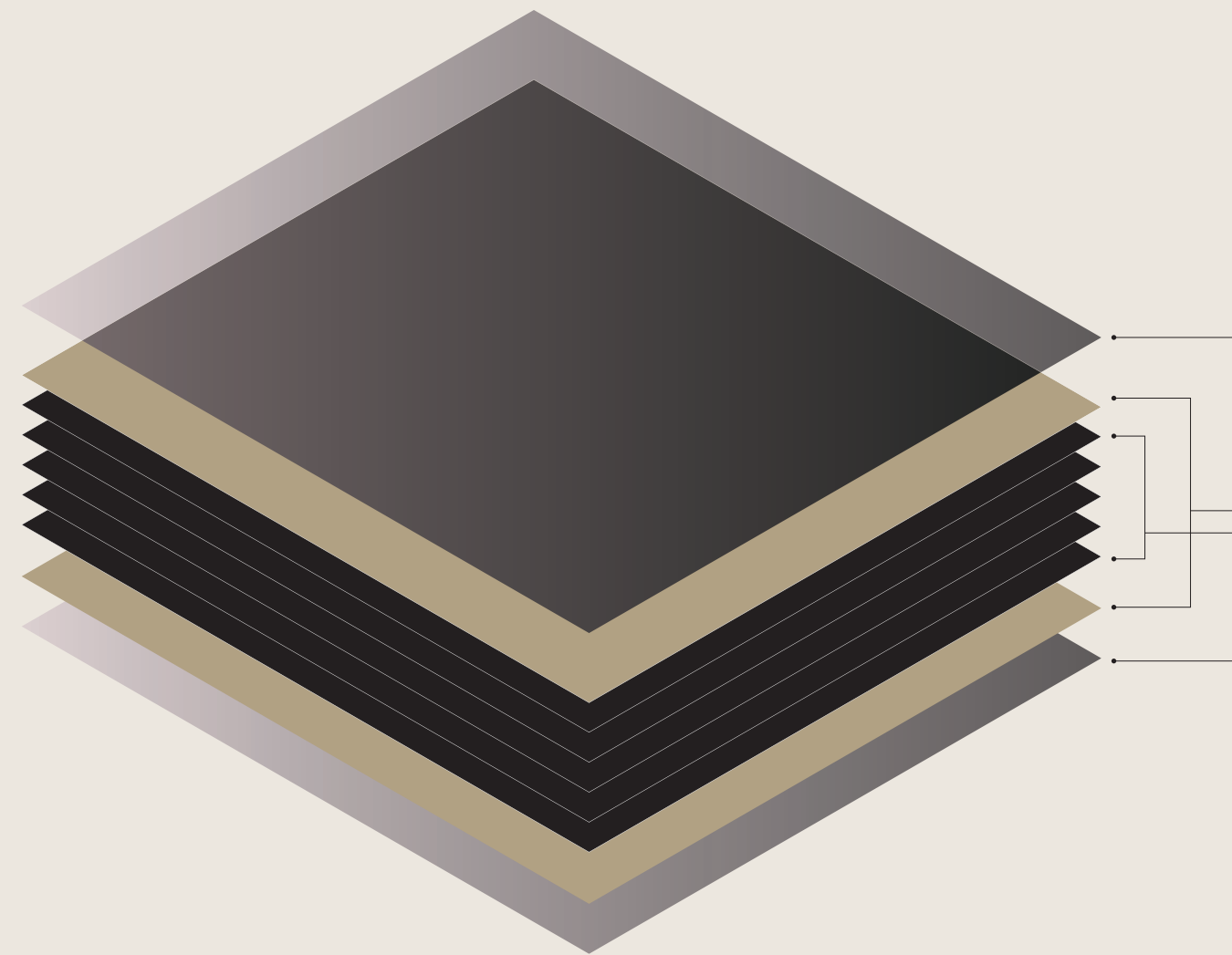


\*As per the test report virus gets 99.99% retarded in 24 hours of contact.  
As per the test report bacteria gets 99.99% retarded in 24 hours of contact.

\*Images used are for representation purpose only.

# Product Construction

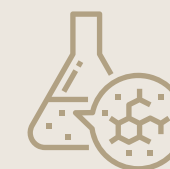
Greenlam Clads are self-supporting High Pressure Laminates (HPL) with a decorative surface that is suitable for exteriors. It is fade-resistant, weather-proof, and compliant to the standards of EDF (EN 438-6 Exterior Grade Severe Use Flame Retardant) which is the best in this classification. The polymeric resins used are made with Non-Halogenated Fire Retardant chemicals which make the Greenlam Clads fire-retardant.



High Quality UV Resistant  
Polymeric Film on both sides

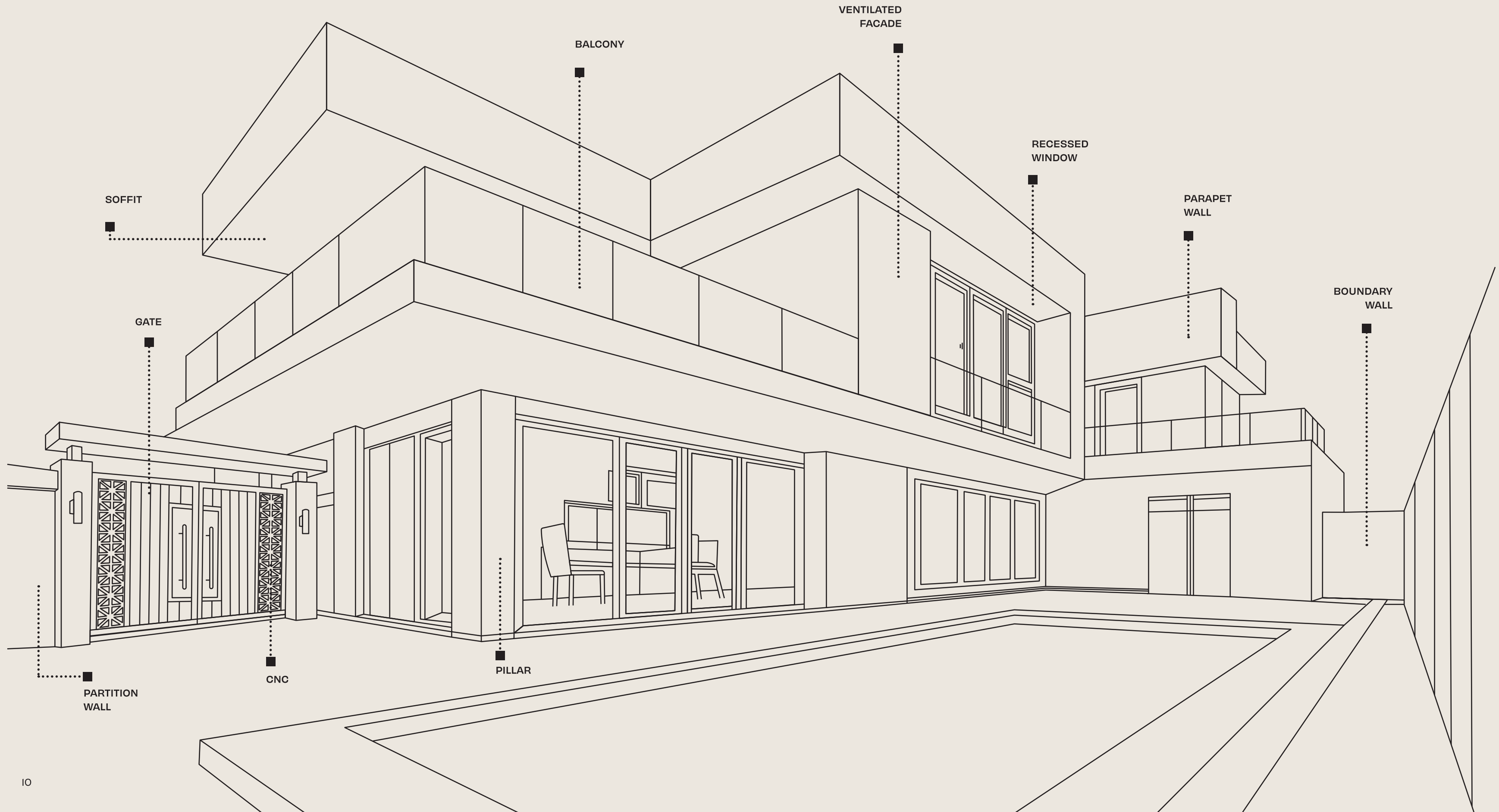


Both sides special exterior grade  
décor paper impregnated with  
premium quality Amino-Plastic  
Thermosetting Resins



Kraft Core layers treated  
with superior grade Phenolic  
Thermosetting Resin containing  
Halogen Free FR Additives

# Application Areas





BALCONY



BOUNDARY WALL



SIDE ELEVATION



SOFFIT



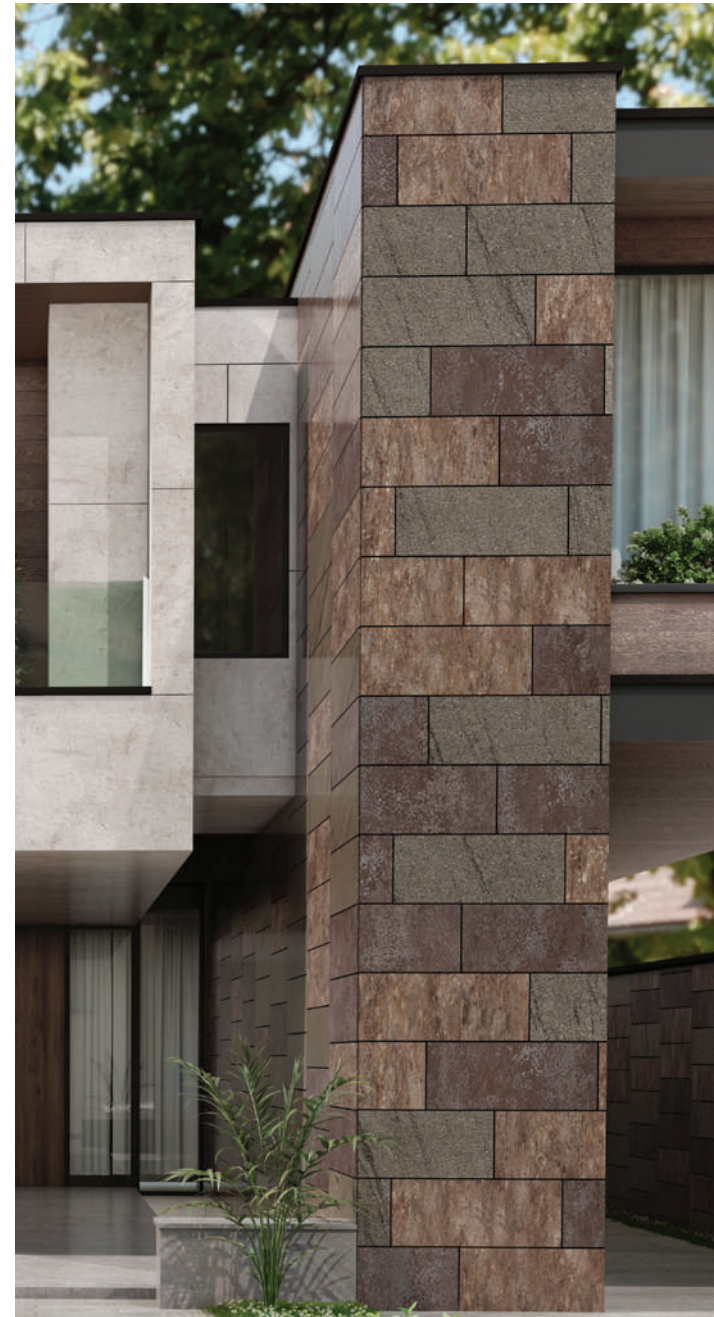
FACADE



PARTITION WALL



PERGOLA



PILLAR

\*Images used are for representation purpose only.

# What makes us class apart

	HARDWOOD	ACP	GLASS	STONE	TILE	GREENLAM CLADS
Fire Retardant			✓	✓	✓	✓
Easy to Maintain		✓			✓	✓
Quick & Easy Installation	✓	✓			✓	✓
Durability				✓	✓	✓
Anti-Graffiti						✓
Energy Efficient						✓
Chemical Resistant						✓
Anti-Dust						✓
Corrosion Resistant						✓
Customisable						✓

12 YEARS WARRANTY



FIRE RETARDANT



EXCELLENT ANTI-GRAFFITI PROPERTIES



CHEMICAL RESISTANT



ENERGY EFFICIENT



MATCHING RIVETS



ANTI-DUST



MOISTURE RESISTANT



ENVIRONMENT FRIENDLY



LOW VOC EMISSION



RESISTANCE TO ACID RAINS



CORROSION RESISTANT



TERMITE RESISTANT



ANTI-BACTERIAL & ANTI-VIRAL



ACOUSTIC RESISTANCE



WITHSTANDS EXTREME TEMPERATURES FROM -60°C TO +80°C



SUPERIOR LIGHT FASTNESS PERFORMANCE (UV RESISTANCE)

STANDARD SIZE	STANDARD THICKNESS*	TEXTURE
4.25' x 10' 1300mm x 3050mm	6mm   8mm   10mm	Jupiter & Suede

\*8mm & 10mm available on order basis.

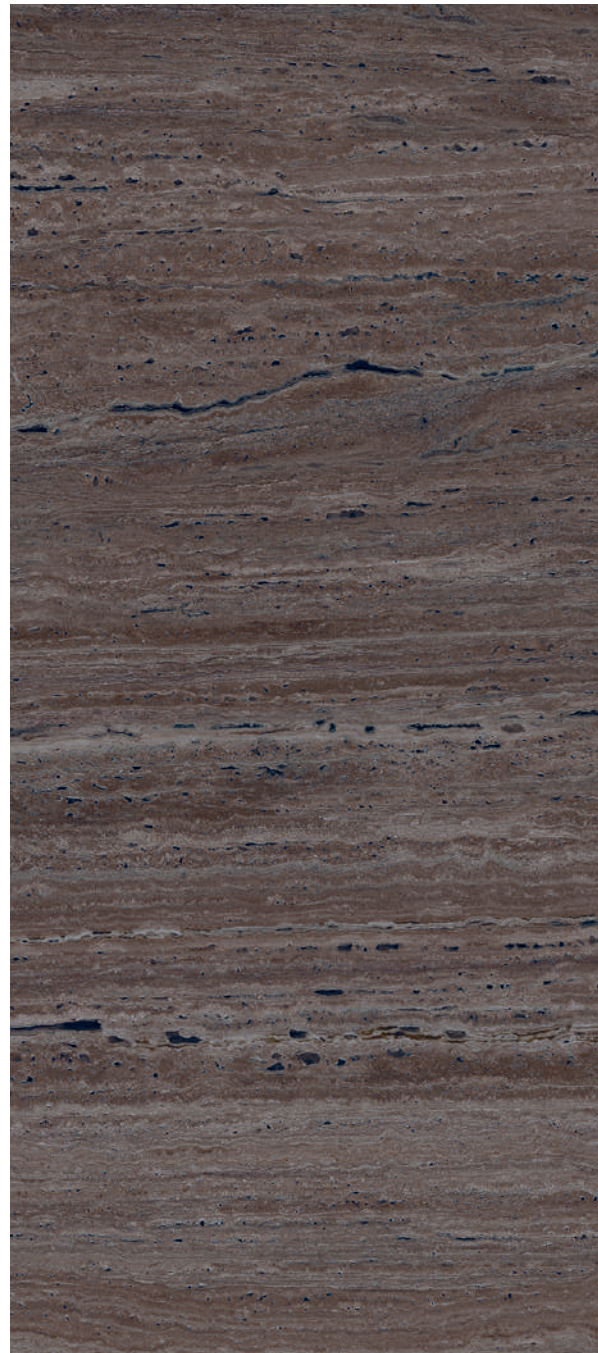
INTRODUCING

# Jupiter – Stone Finish

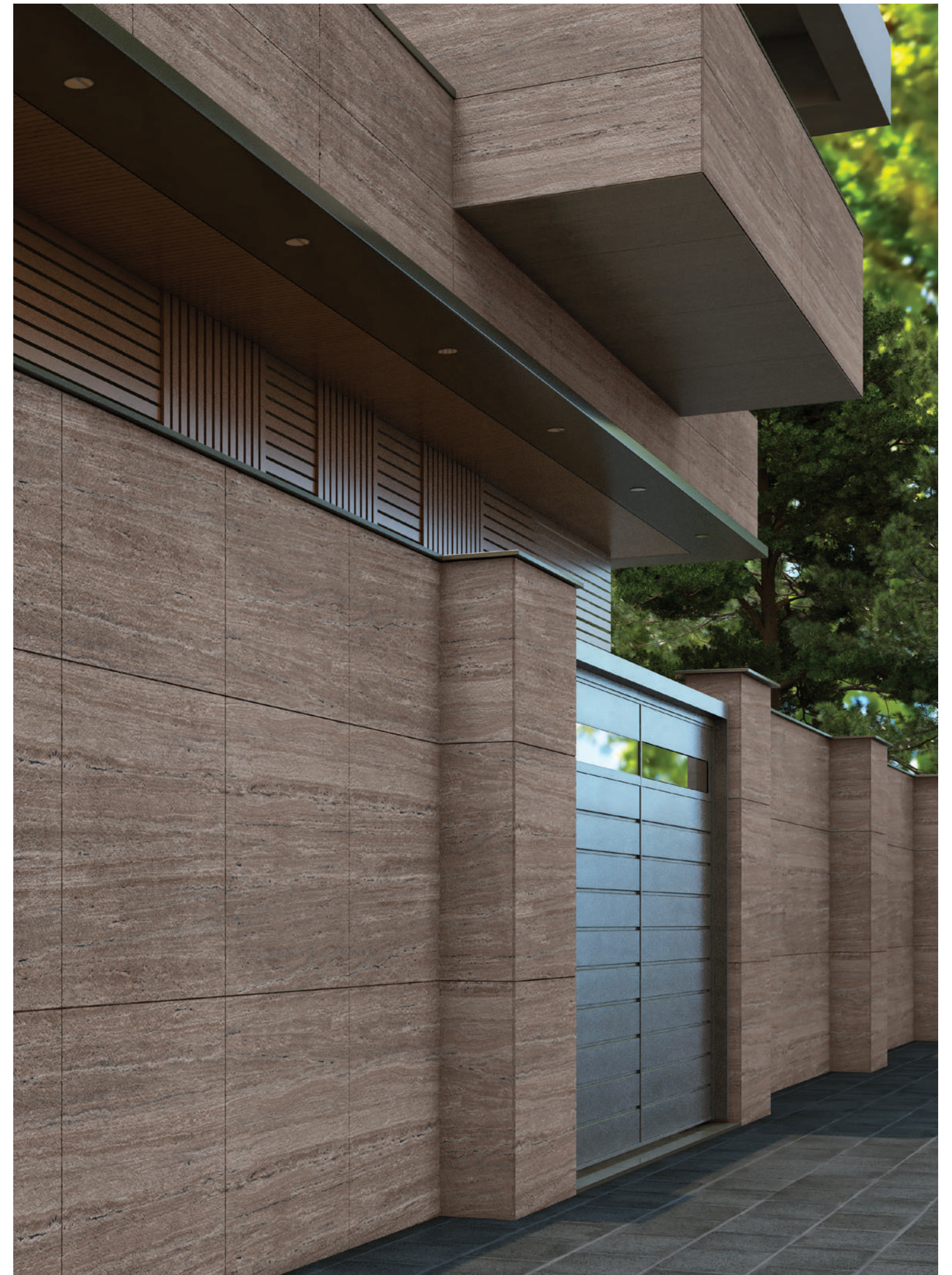
NEW  
TEXTURE



These stone inspired textures lend an immediate sense of finesse to exteriors. Their natural depth, subtle grain, and timeless character turn façades into statements of purposeful creations. With patterns inspired by real stone, Greenlam Clads elevate exteriors with contemporary and unmistakably extraordinary crafts.



First  
Impressions  
TO  
*Timeless  
Expressions*



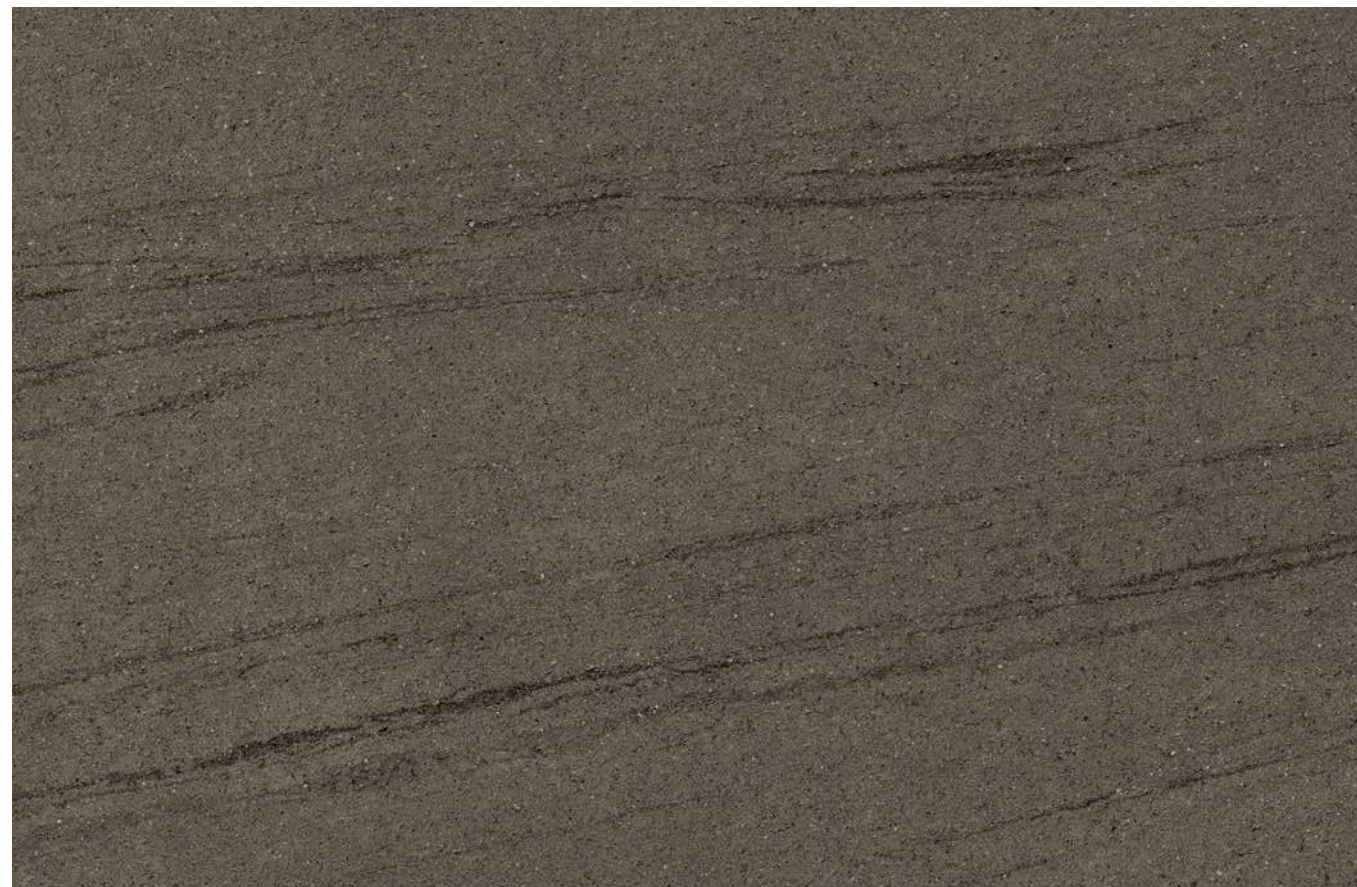
\*Images used are for representation purpose only.

Jupiter



N

9214 JUP  
Ercolan White

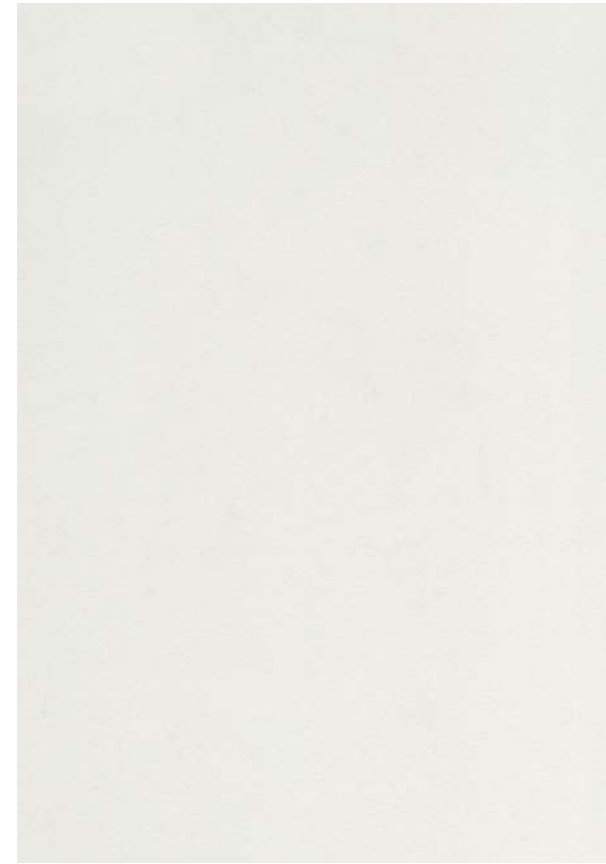


N

9215 JUP  
Ercolan Grey



\*Images used are for representation purpose only.



N

9271 JUP  
Clear White



N

9279 JUP  
Rock Brown



N

9209 JUP  
Russet Stein



N

9213 JUP  
Ferrous Cemento



N

9217 JUP  
Travona Beige



N

9218 JUP  
Trave Taupe



N

9219 JUP  
Gravento

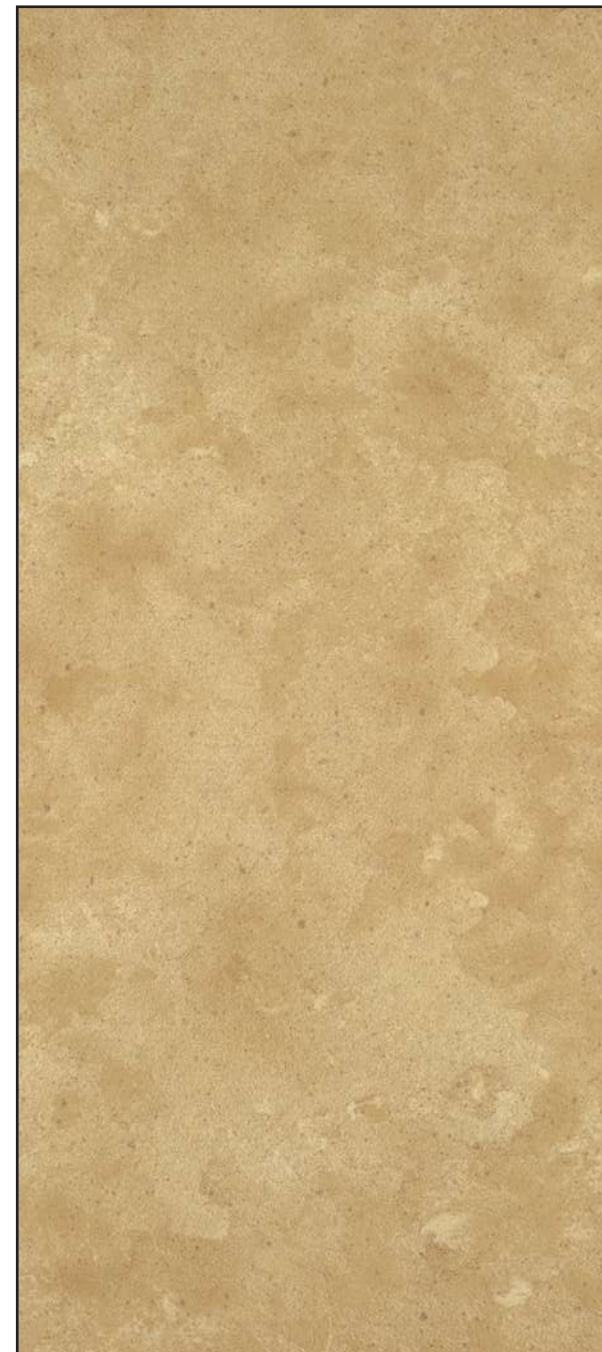


# Suede Finish

REFINED  
SOPHISTICATION



Soft to the eye and smooth to the touch, Suede Finish brings a refined sophistication to exteriors. Its velvety texture and understated charm create façades that exude warmth and quiet luxury. With a finish that balances subtle elegance and modern appeal, Greenlam Clads transform surfaces into timeless expressions of contemporary design.



First Impressions  
to  
*Timeless Expressions*



\*Images used are for representation purpose only.



# Patterns

Breaking away from convention, Patterns infuse exteriors with bold imagination and artistic flair. Their dynamic patterns, and fluid forms transform façades into canvases of creativity. With designs that spark curiosity and redefine modern aesthetics, Abstract Patterns bring exteriors alive with originality and unmistakable distinction.



\*Images used are for representation purpose only.



9207 SUD  
Harbour



9208 SUD  
Pietra



9205 SUD  
Citron Stone



9201 SUD  
Premio



\*Images used are for representation purpose only.



9217 SUD  
Travona Beige



9218 SUD  
Trave Taupe



9219 SUD  
Gravento

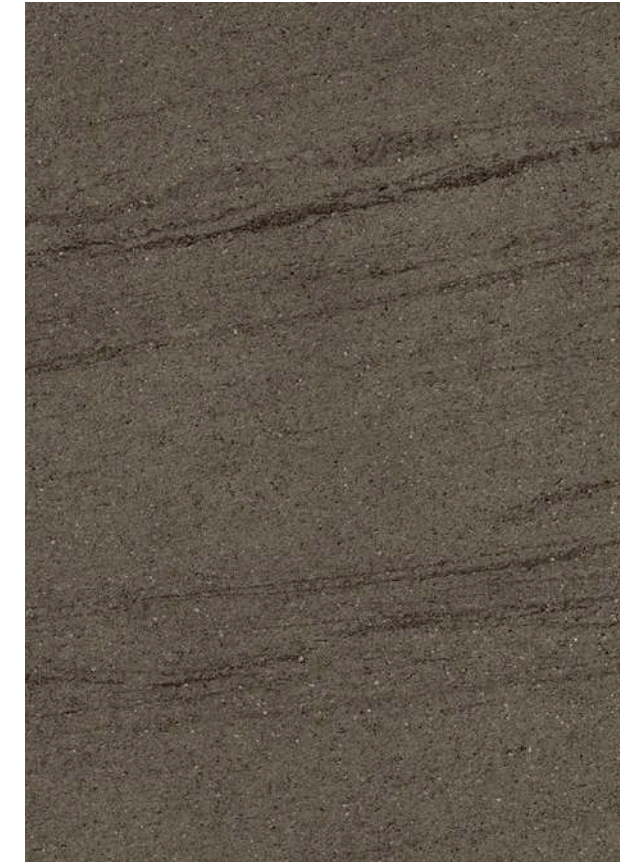




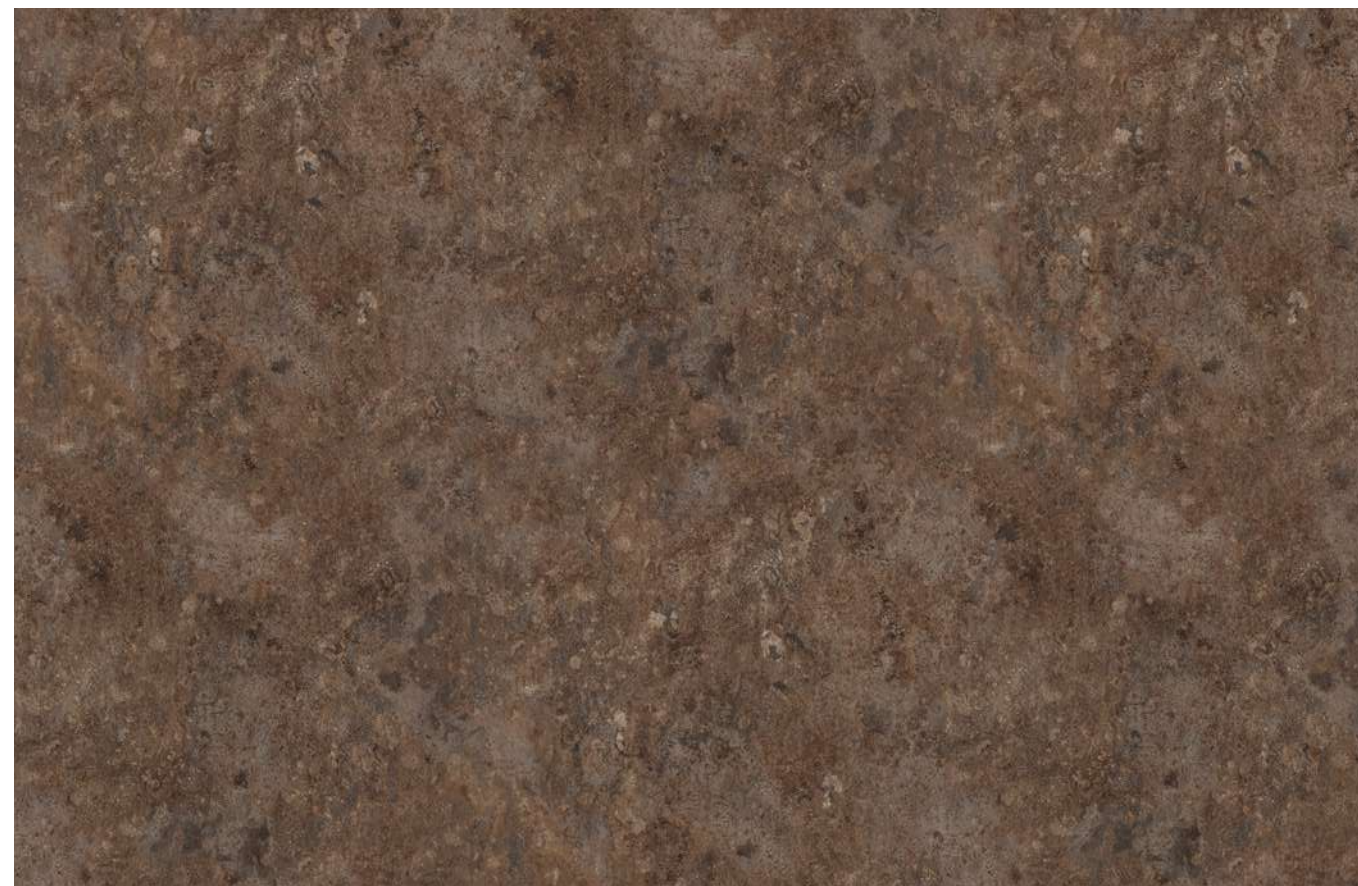
9212 SUD  
Rock Salt



9214 SUD  
Ercolan White



9215 SUD  
Ercolan Grey



9210 SUD  
Lava Moreno



9209 SUD  
Russet Stein



9213 SUD  
Ferrous Cemento





# Woods

The Woods bring crafted richness to exteriors. The layered grain patterns and natural tonal variations introduce depth and warmth, giving exteriors a unique character. Designed to echo the elegance of real wood while performing far beyond it, Woods make exteriors feel thoughtful, elevated, and truly extraordinary.



\*Images used are for representation purpose only.



9116 SUD  
Eden Oak



9117 SUD  
Sunburn Oak



9107 SUD  
Lorraine Walnut



Note: Grain direction shown horizontally for sample purpose ;  
Actual product features vertical grain orientation.



\*Images used are for representation purpose only.



9105 SUD  
Caramel Streak



9106 SUD  
Coral Streak





9110 SUD  
Pure Walnut



9111 SUD  
Novacento Pine



9112 SUD  
Trusted Teak

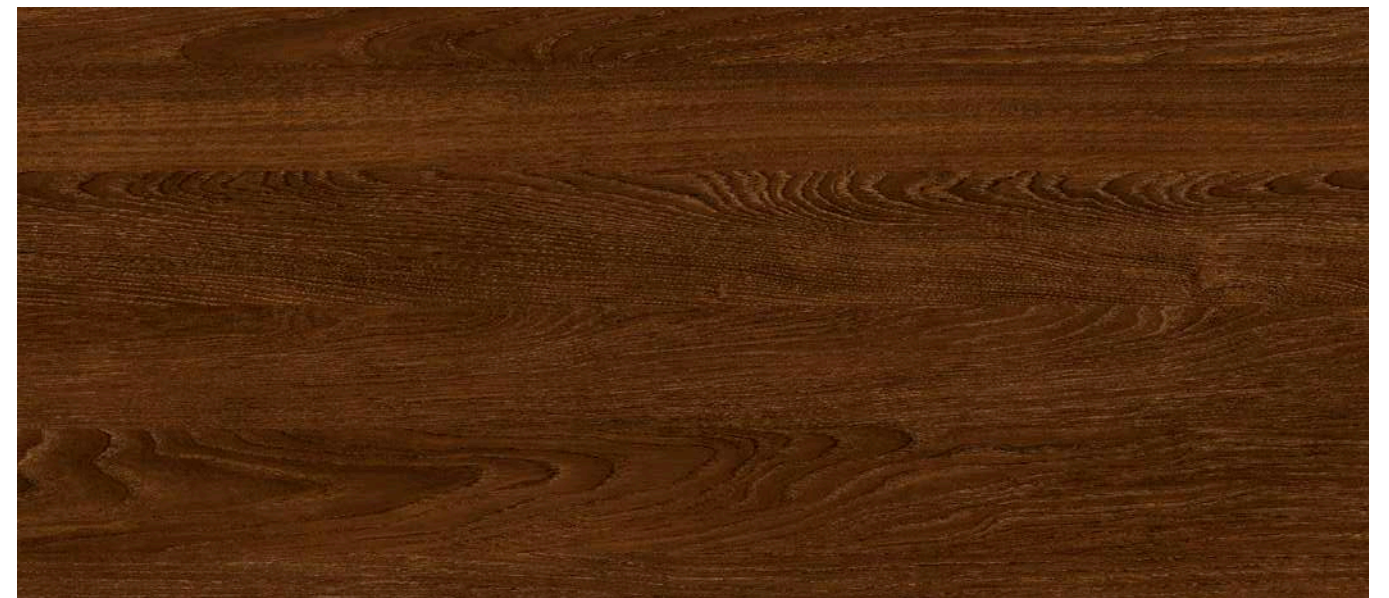
Note: Grain direction shown horizontally for sample purpose ;  
Actual product features vertical grain orientation.



9108 SUD  
Arch Wood

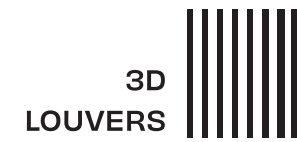


9104 SUD  
Enigma



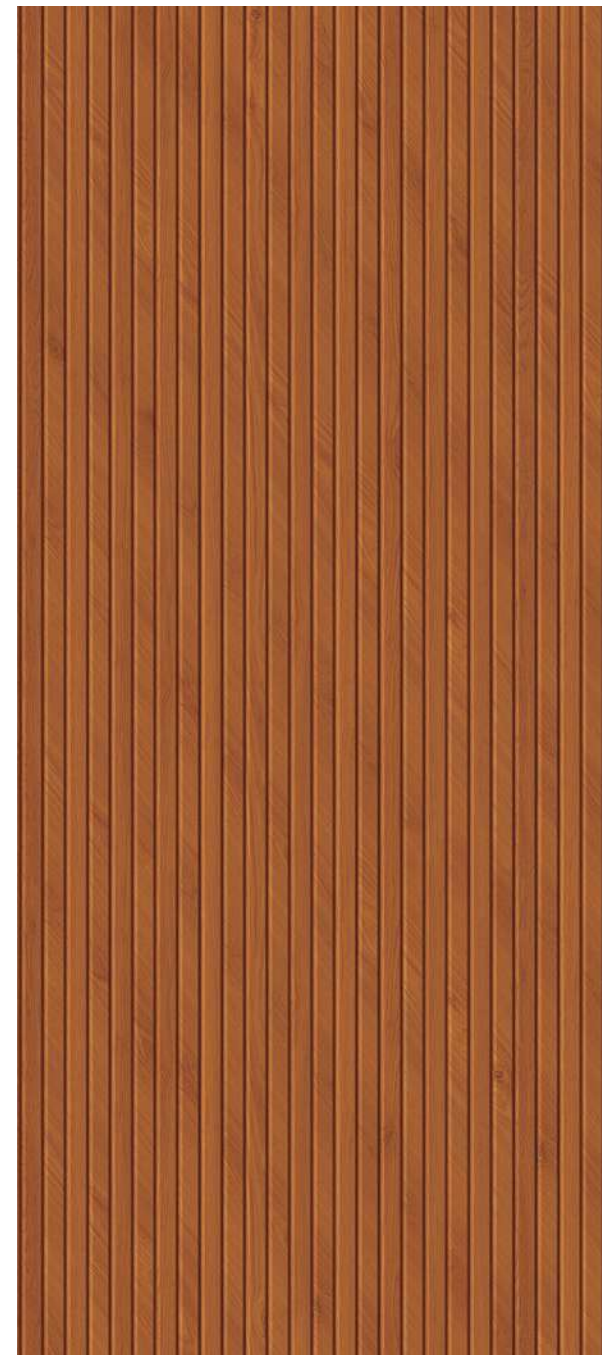
9118 SUD  
Morgan Oak

# 3D Louvers



## Unique Expressions, The Way You Imagined It.

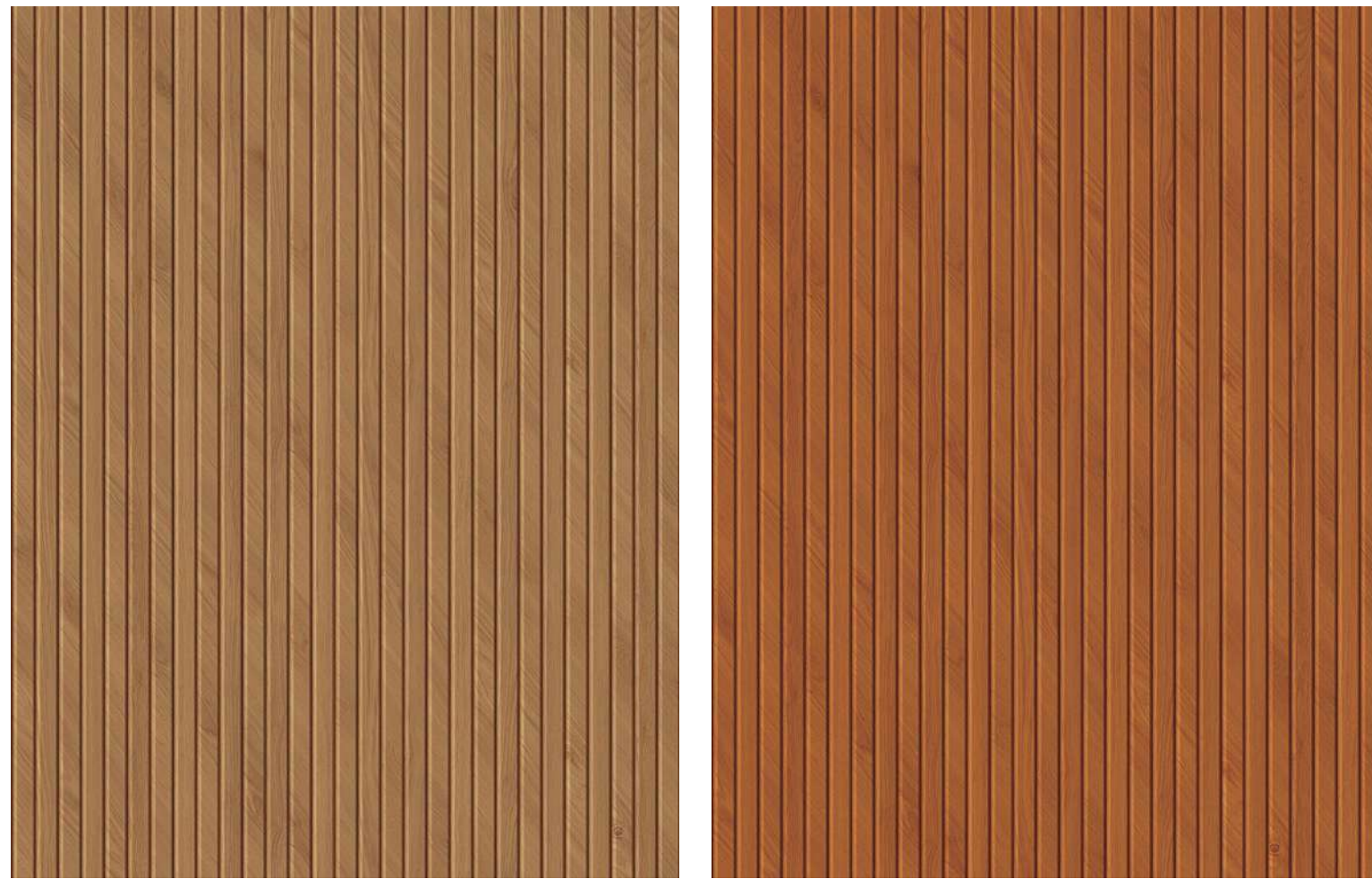
Louvers transform façades into living compositions - adding depth, rhythm, and ever-changing play of light and shadow. More than simple fins, they bring precision in form, lightness in design, warmth through texture, and modernity in geometry. Executed in Exterior HPL, these three Dimensional louver designs seamlessly blend shade, openness, and character, turning buildings into dynamic architectural statements.



Dynamic  
**Designs**  
TO  
*Timeless  
Expressions*

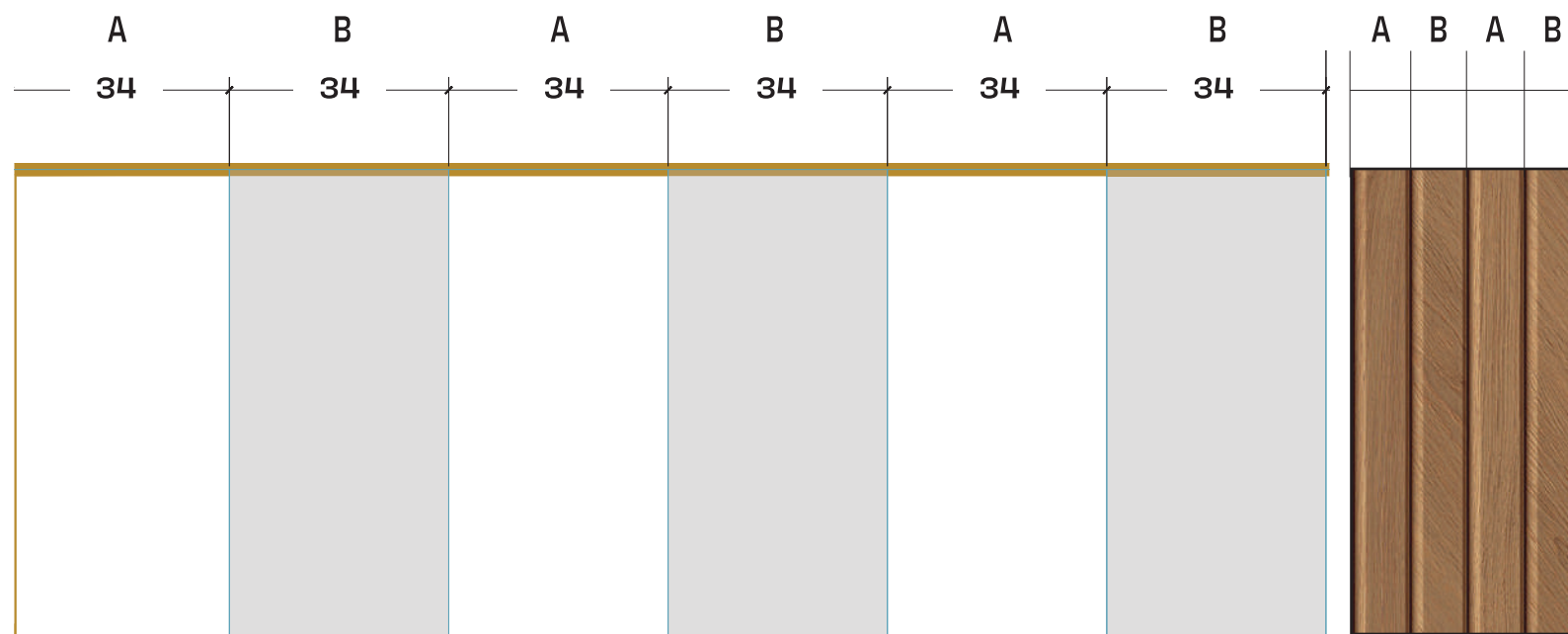


\*Images used are for representation purpose only.



**N** 9351 SUD Timber Slat

**N** 9352 SUD Nova Slat



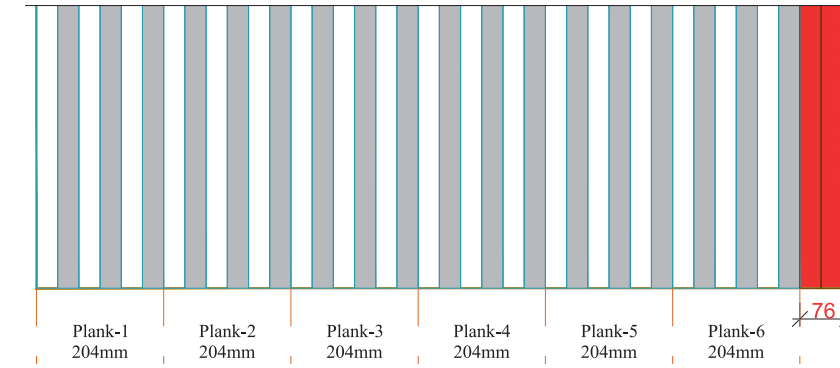
CAD representation showing alternate slats in white (A) and Grey (B)

## Panel cutting recommendations.

Designed for seamless repeat across 1300mm panel width.

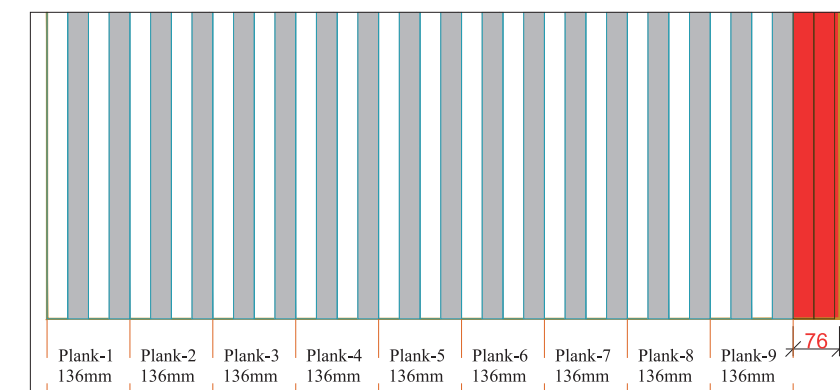
### 1. 204mm cut width

6 slats per plank



### 2. 136mm cut width

4 slats per plank



### Advisory

- Maintain a uniform 6 mm gap between all adjacent panel edges.
- Ensure consistent orientation during panel installation.
- Avoid arbitrary cutting, rotation, or re-sequencing, as this may disrupt visual alignment and pattern continuity.
- Panels may only be cut in multiples of the specified widths (e.g., 2x, 3x, etc.).
- The final panel layout must be reviewed and approved by the Architect/ Fabricator, considering site conditions and overall design intent.
- Material wasteage will vary depending on the cutting pattern adopted.

Note: Highlighted area represents wasteage as indicated.





# Colours

Clean tones and uniform surfaces bring form, proportion, and structure to take centerstage, letting exteriors speak without distraction. Designed for bold compositions and precise detailing, these solids lend exteriors a strikingly extraordinary presence that feels modern and confident.

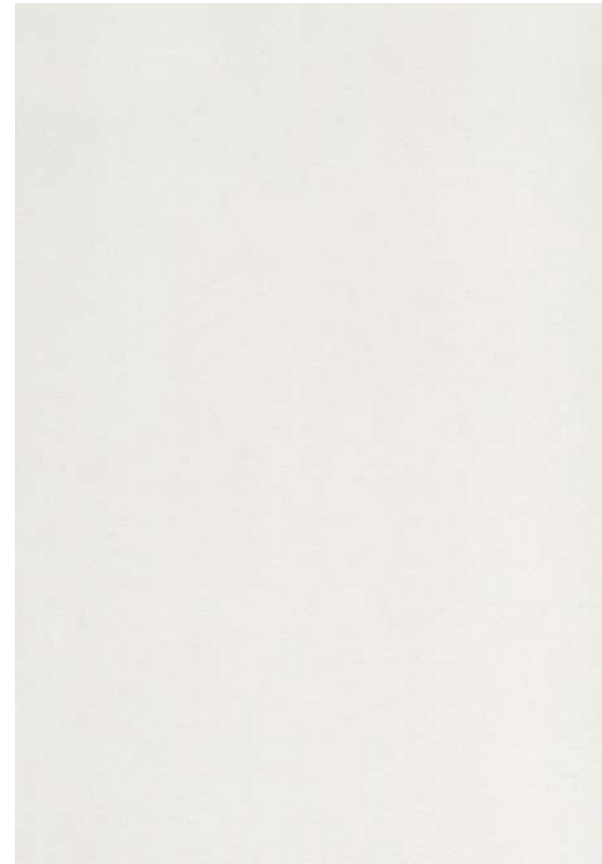


\*Images used are for representation purpose only.



N

9251 Alpino White



9271 Clear White



9276 Cane



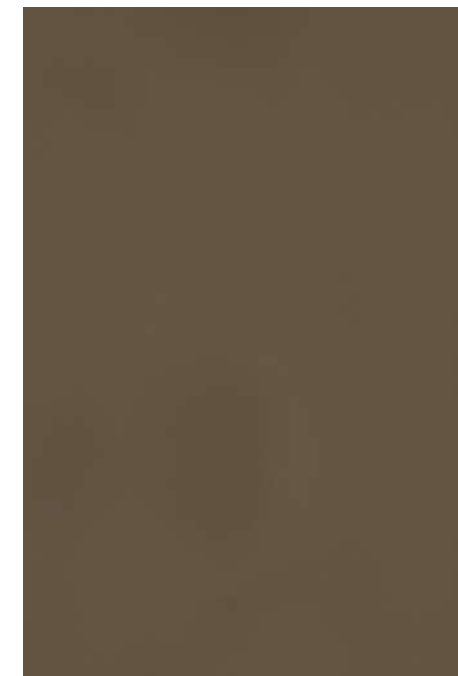
9277 French Beige



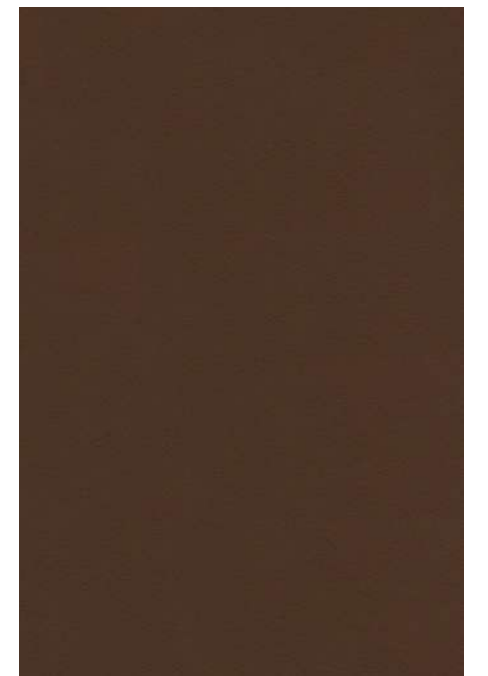
\*Images used are for representation purpose only.



9278 Sage



9279 Rock Brown



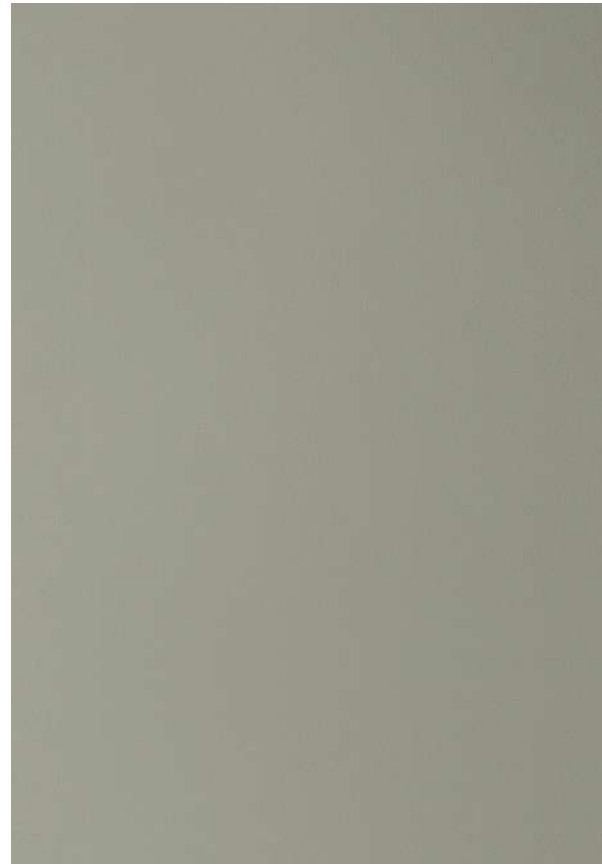
9274 Choco Brown





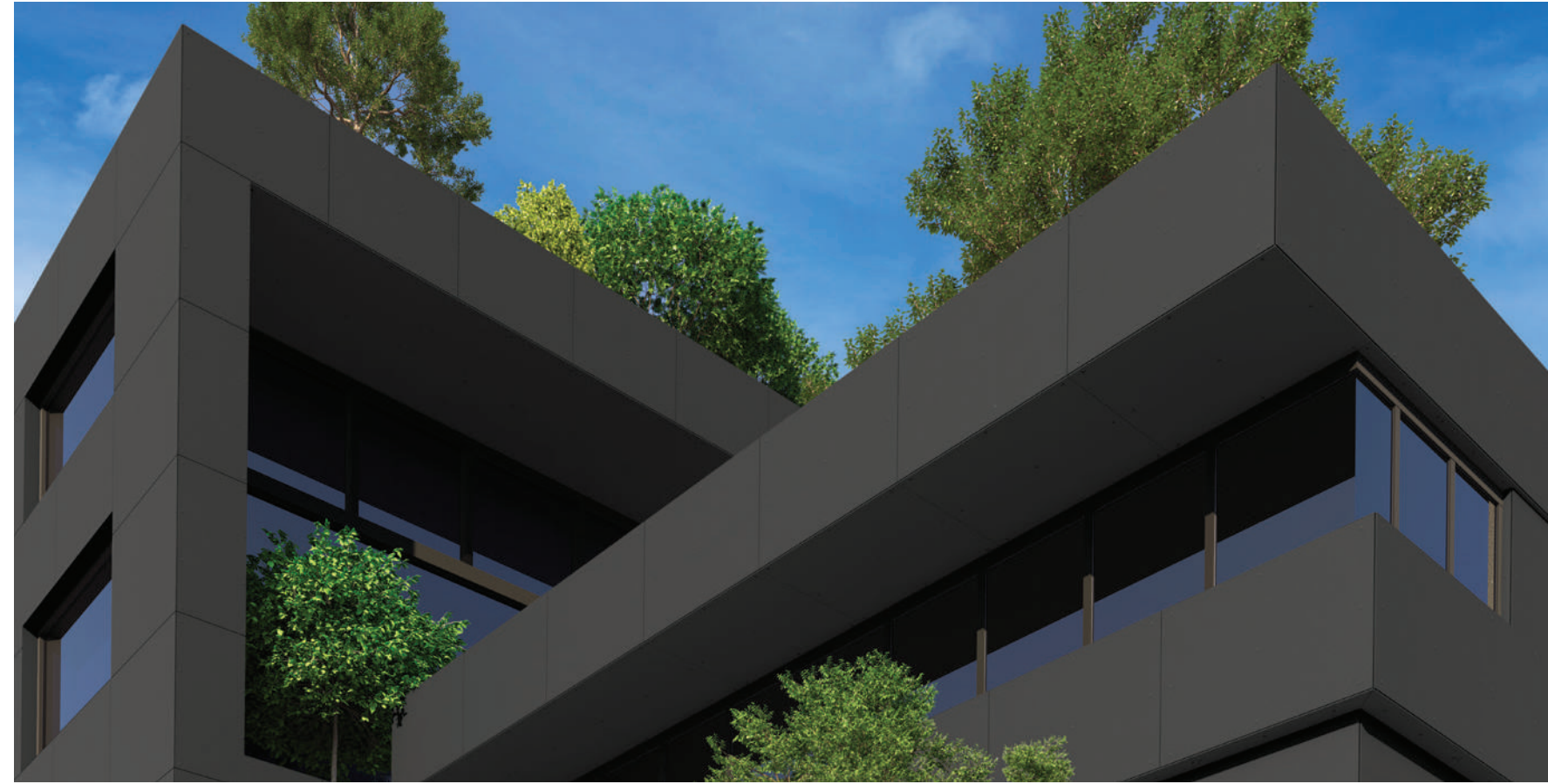
N

9254 Steep Grey

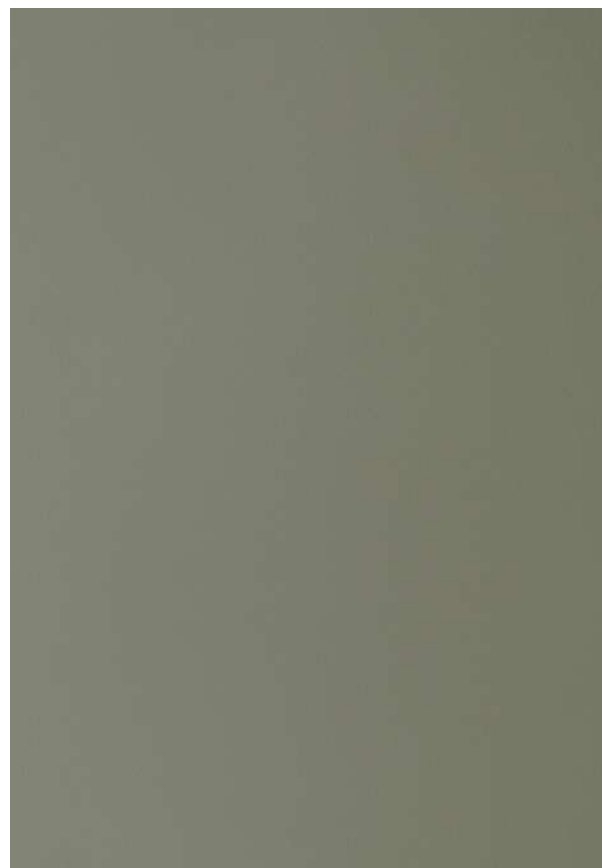


N

9283 Mink Grey

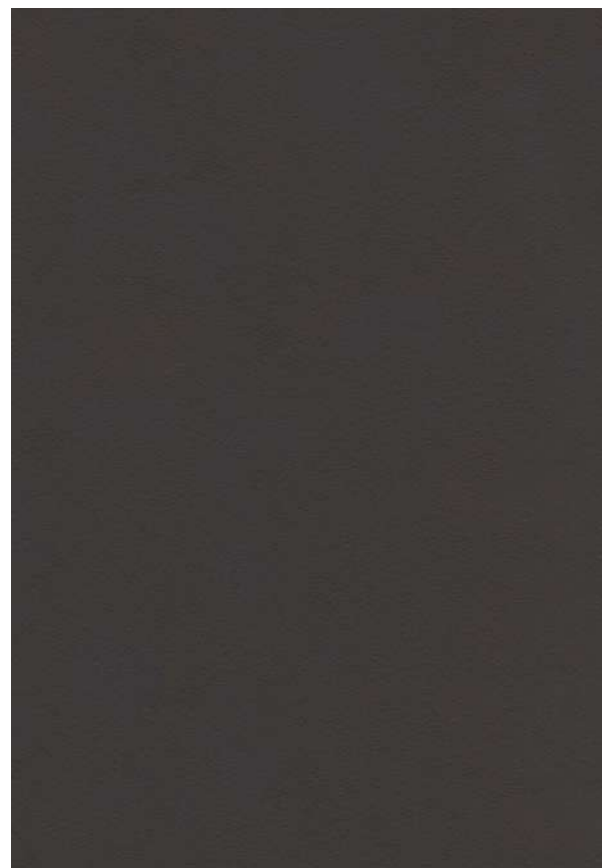


\*Images used are for representation purpose only.



N

9253 Cloudburst



9273 Murky Grey



9272 Oyster



N

9282 Battalion Grey

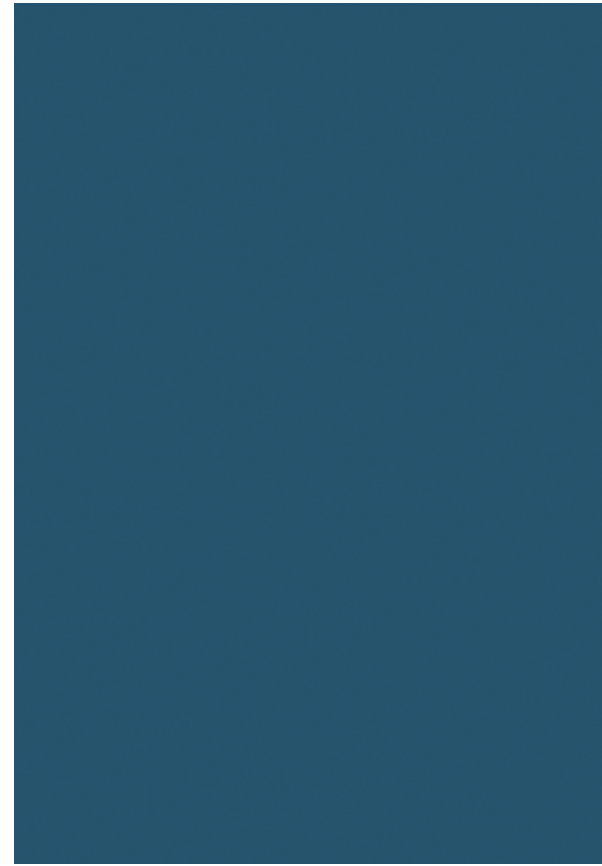


N

9257  
Mock Orange



9280  
Mineral Yellow



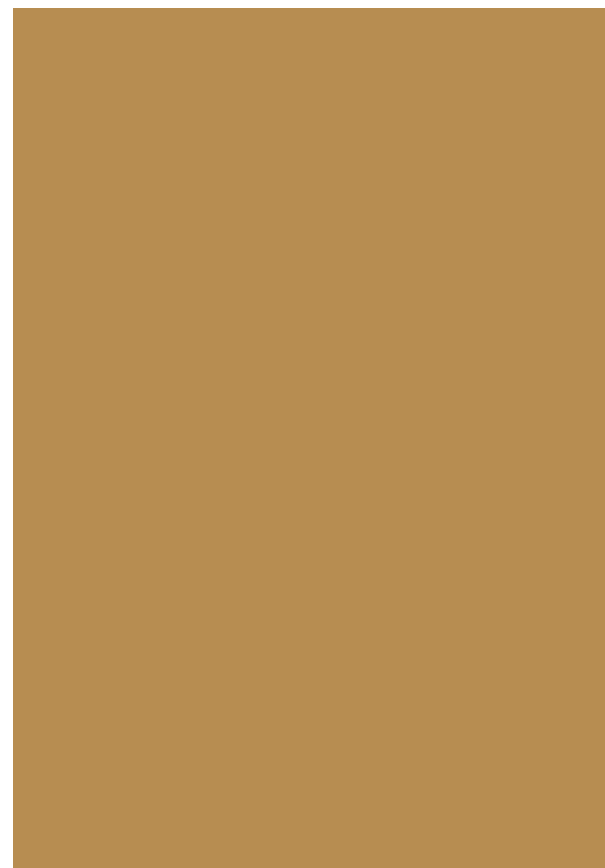
N

9261  
Poseidon



N

9262  
Posy Green



N

9256  
Prairie Sand

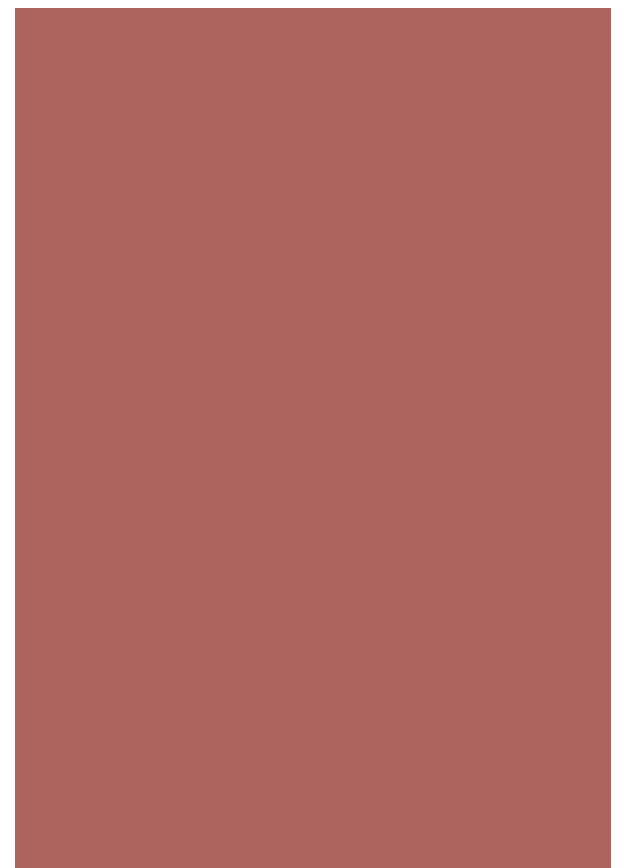


9275  
Vermilion Red



N

9259  
Rosebud



N

9258  
Baked Clay

# Bring Your Dream Facade to Life



## Greenlam Clads Design Lab – Inspiration Delivered in 72 Hours

Transform the way you imagine your exteriors with Greenlam Clads Design Lab. Whether it's a sleek corporate building or a stylish home, Design Lab helps you see your ideas come alive before you build.

With Greenlam Clads Design Lab, you don't just imagine possibilities - you experience them. Get your dream look today!



SCAN TO BEGIN  
YOUR JOURNEY

- 1** Click a picture of your residential or commercial project for which the consultation is required
- 2** Go to [Greenlamclads.com](https://www.greenlamclads.com) and get started with Design Lab Service.
- 3** Choose from a wide range of innovative cladding options and upload the image along with required details.
- 4** Get your customised design inspiration delivered in 72 hours, right in your mailbox.



BEFORE



AFTER

# Technical Specs

## Product: Greenlam Exterior Clads 1300mm x 3050mm

PROPERTIES	TEST STANDARD, EN 438 PART 2 & 6: 2016	UNIT	SPECIFIED VALUES	GREENLAM VALUES
Classification	EN 438-6- 4		EXTERIOR, SEVERE USE FLAME RETARDANT GRADE, EDF	
<b>PHYSICAL &amp; DIMENSIONAL PROPERTIES</b>				
Thickness Variation	EN 438-2 - 5	mm	2.0 ≤ t < 3.0 : ± 0.20 3.0 ≤ t < 5.0 : ± 0.30 5.0 ≤ t < 8.0 : ± 0.40 8.0 ≤ t < 12.0 : ± 0.50 12.0 ≤ t < 16.0 : ± 0.60 16.0 ≤ t < 20.0 : ± 0.70 20.0 ≤ t < 25.0 : ± 0.80 25.0 ≤ t : As agreed	Complies
Surface quality (Spot, Dirt etc.)	EN 438-2 - 6 5.2.4	mm <sup>2</sup> /M <sup>2</sup>	2.0(max)	Complies
Fibers, Hairs & Scratches etc.		mm <sup>2</sup> /M <sup>2</sup>	200(max)	Complies
Length and Width Variation	EN 438-2 - 6	mm	+10mm /-0mm	+5mm /-0mm
Edges Straightness	EN 438-2 - 7	mm/M	1.5 (max)	≤ 1
Edges Squareness	EN 438-2 - 8	mm/M	1.5 (max)	≤ 1
Flatness	EN 438-2 - 9	mm/M	2.0 ≤ t < 6.0 : 8.0 6.0 ≤ t < 10.0 : 5.0 10.0 ≤ t : 3.0	Complies
Density	EN ISO 1183 -1:2019	g/cm <sup>3</sup>	1.35	1.38
Dimensional Stability at Elevated Temperature	EN 438-2 -17			
Longitudinal Direction		%	0.30 (max)	0.18
Transverse Direction		%	0.60 (max)	0.38
<b>MECHANICAL PROPERTIES</b>				
Resistance to Wet Conditions,	EN 438-2-15			
Increase in Mass		%	8.0 (max)	Complies
Surface Rating		Rating	4 (min)	Complies
Edge Rating		Rating	3 (min)	Complies
Resistance to Impact by Large Diameter Ball				
Drop Height	EN 438-2 -22	mm	1800	2000
Diameter of Indentation		mm	10 (max)	7
Flexural Strength	EN ISO 178: 2019	Mpa	80 (min)	100
Flexural Modulus	EN ISO 178: 2019	Mpa	9000(min)	10700
Thermal Conductivity	EN 12524: 2000	W/M <sup>2</sup> K	No requirement	0.24
Resistance to Fixing (Screw pull out strength)	ISO 13894-1: 9	N	2000 (min)	Meets
<b>LIGHT FASTNESS &amp; WEATHER RESISTANCE</b>				
Resistance to Climatic Shock	EN 438-2-19	Rating	Appearance -4 (min)	4
Flexural Strength Index		Index	D <sub>s</sub> - 0.80 (min)	Meets
Flexural Modulus Index		Index	D <sub>m</sub> - 0.80 (min)	Meets
<b>SURFACE PROPERTIES</b>				
Resistance to UV Light, after 1500 hours exposure	EN 438-2-28	Rating	Grey Scale contrast-3 (min) Appearance- 4 (min.)	3~4 4~5
Resistance to artificial weathering including light fastness, after 650 MJ/M <sup>2</sup> Radiant exposure	EN 438-2-29	Rating (After 3000 Hours as per standard)	Grey Scale contrast-3 (min) Appearance- 4 (min.)	3~4 4~5
<b>FIRE PERFORMANCE</b>				
Reaction to Fire	EN 13501-1- 2017	Euro class	≥ 6mm thick: B-s2, d0 < 6mm thick: C-s2,d0 or better	B-s1, d0
Surface Spread of Flame	UL 723	Class	A	A
Flame Spread Index		Index	0-25	Meets
Smoke Development Index		Index	0-450	Meets
Calorific Value	ISO 1716: 2010	MJ/kg	19.91 (max)	Meets
<b>CORROSION RESISTANCE</b>				
Resistance to corrosion with 5% Sodium Chloride Spray (Salt Spray Test)	ASTM B 117	Hours	500 (min) (Industry Standard)	Exceeds 700
Resistance to Acid rain (of 10% HCL)		Hours	None	24
<b>SOUND INSULATION CHARACTERISTICS IN BUILDING &amp; BUILDING ELEMENTS</b>				
Sound Transmission Class (STC)	IS: 9901 (Part III-1981; DIN: 52210 Part 1-1983 ISO: 10140Part III)/ ASTM-E-90	Rating	No Specification	28

**CLASS (RATING):** 1 = Surface Damage 2 = Severe appearance alteration  
3 = Moderate Change 4 = Slight change visible from certain angle 5 = No Change  
**Bacteria Tested:** 1. Pseudomonas Aeruginosa, 2. Enterococcus Faecalis, 3. Candida Albicans, 4. Escherichia coli, 5. Klebsiella Pneumoniae,  
6. MRSA (Methicillin Resistant Staphylococcus Aureus), 7. Salmonella Enterica

**Fungus Tested:** 1. Aspergillus niger, 2. Penicillium funiculosum, 3. Gliocladium virens, 4. Chaetobium globosum 5. Aurobasidium pullulans  
**Note:** Greenlam products are manufactured thoroughly to standards. The values given above are to the best of knowledge but without liability/warranty, expressed or implied.

# Branch Offices

AGARTALA 8134944778	AGRA 9650101768	AHMEDABAD 9909983383	BENGALURU 6366892055	BHUBANESHWAR 9777454083
CHANDIGARH 7087888531	CHENNAI 6381815215	COIMBATORE 9003917470	DELHI/NCR 95999 03911	DEHRADUN 9005116688
GHAZIABAD 9953190179	GUWAHATI 8134944778	HISAR 9896393599	HYDERABAD 9100364323	INDORE 9752593453
JAIPUR 9599073622	KOCHI 9746474578	KOLKATA 9804462295	LUCKNOW 9005941116	MUMBAI 9136102399
MADURAI 9500099471	NAGPUR 9158886981	PATNA 99559 99500	PUNE 9503003339	RAIPUR 9752590672
RANCHI 9523595272	VIJAYAWADA 7032307555	NASHIK 9730084517	KOLHAPUR 7420831251	

**N** - NEW DESIGN

SCAN TO DOWNLOAD  
E-BROCHURE



SCAN TO DOWNLOAD  
INSTALLATION MANUAL



SCAN TO DOWNLOAD  
INSPIRATIONAL BOOKLET



GREENLAM INDUSTRIES LTD.  
2nd Floor, West Wing, Worldmark I, Aerocity,  
IGI Airport Hospitality District,  
New Delhi - 110 037, India.  
E-mail : info@greenlam.com

Toll free no: 1800 833 0004

[www.greenlamindustries.com](http://www.greenlamindustries.com)

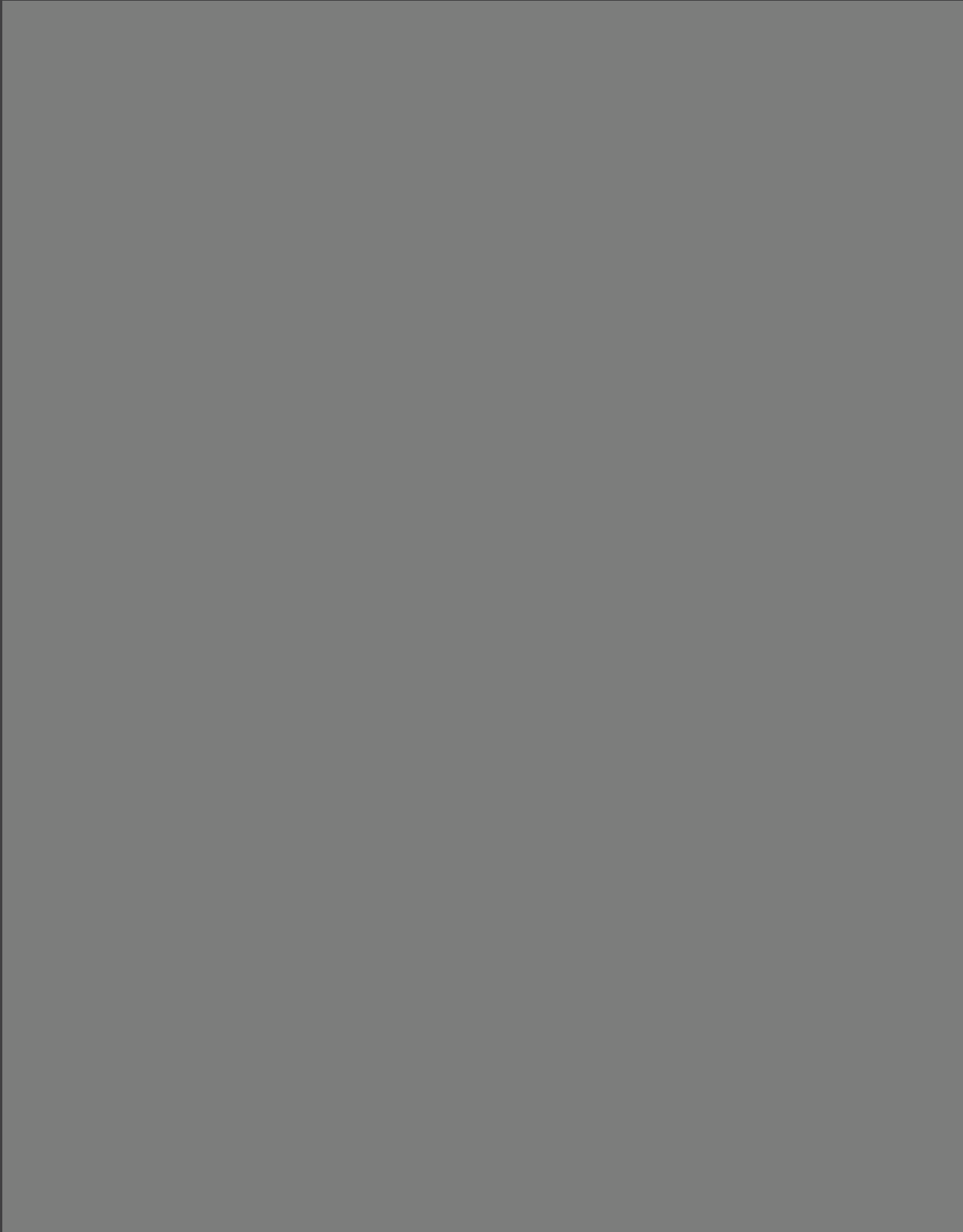


GREENLAM EXPERIENCE CENTER

KOLKATA  
25/B, Shop No. E & F,  
Mirza Ghalib Road, Park Street.  
Opposite: Westside Mall, Kolkata - 700016.  
Contact No: +91-98303-18020; +91-62921-26662  
Email: experiencecenter.kolkata@greenlam.com

GREENLAM EXPERIENCE CENTER

AHMEDABAD  
Showroom No- 1 & 2, Ground Floor,  
Block-A, Westgate Business Bay, SG Highway,  
Ahmedabad - 380051  
Contact No: +91-9909938024  
Email: experiencecenter.ahmedabad@greenlam.com



**FRONT :**  
9271 Clear White  
Thickness : 6mm

**Jupiter Finish**

**BACK :**  
9214 Ercolan White  
Thickness : 6mm

**Suede Finish**

